



BURLINGTON
ELECTRIC
DEPARTMENT



ELECTRIC VEHICLES

REBATES AVAILABLE

Rebates apply to purchase or lease.

Full terms & conditions at burlingtonelectric.com/ev

up to **\$7,500** IRS Tax Credit

\$1,200 New EV or PHEV

+ **\$600** Low/Moderate Income (EV)

+ **\$300** Low/Moderate Income (PHEV)

+ **\$400** Home Charger Level 2 (EV)

\$800 Pre-Owned EV or PHEV

Charge at home during off-peak hours (10pm-12pm) with an approved charger for just 60¢/gallon.

Charge at one of BED's public charging stations at the equivalent of \$1.46/gallon.

EQUIVALENT OF



PER GALLON

NO OIL CHANGES

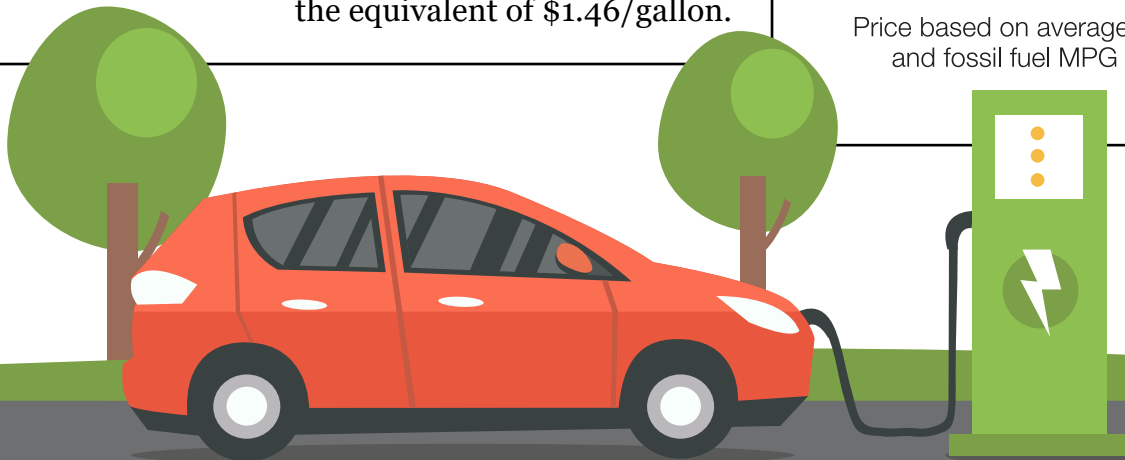
NO SPARK PLUGS

NO TIMING BELTS

NO EMISSIONS!

burlingtonelectric.com/ev

Price based on average EV MPGe and fossil fuel MPG ratings.



Have questions about Electric Vehicles?
Contact us at ev@burlingtonelectric.com
or at (802) 865-7300.

Learn more about rebates, charger maps,
financing, and video testimonials.
burlingtonelectric.com/ev



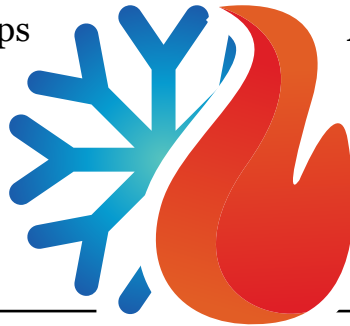
BURLINGTON
ELECTRIC
DEPARTMENT



HEAT PUMPS

COLD CLIMATE AIR SOURCE HEAT PUMPS

Cold climate air source heat pumps provide energy efficient heating *and* cooling, work well in cold climates, and can do so for as little as *one quarter* of the cost of conventional appliances.



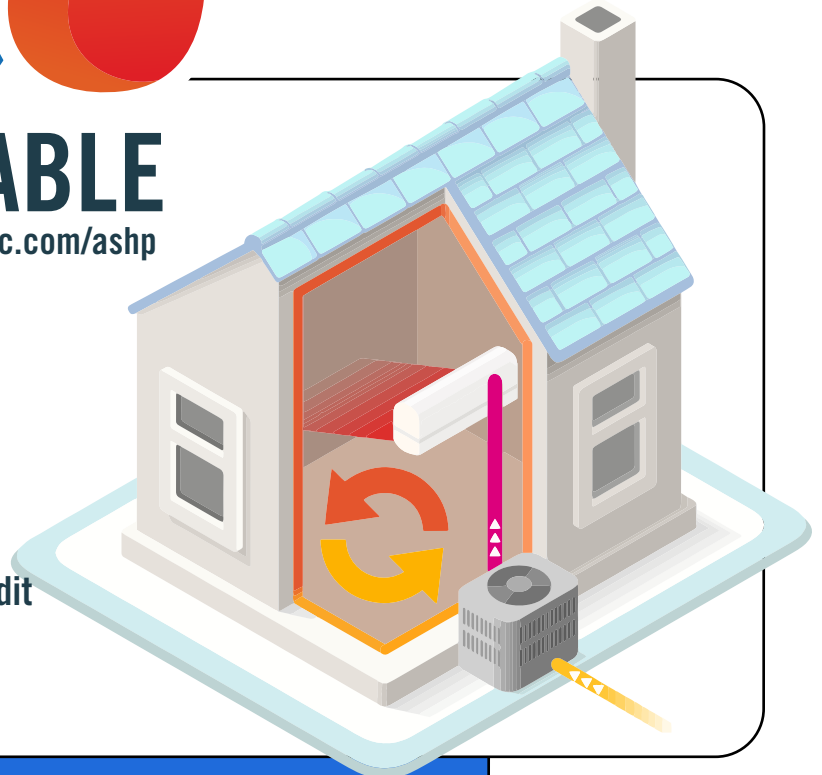
As a Burlington Electric Department customer, you have access to free technical support and advice from BED's Energy Services Team for your next heat pump project.

REBATES AVAILABLE

Full terms & conditions at burlingtonelectric.com/ashp

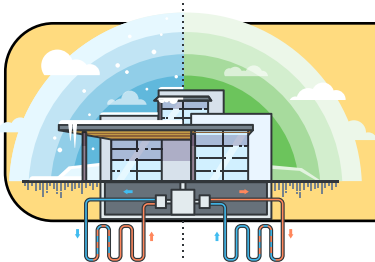
- up to \$1,000** From BED
- + \$500** Limited-Time Rebate*
- + \$500** From Your Installer
- + \$200** Low/Moderate Income
- + \$ 50** With Weatherization Audit

up to \$2,250 Possible Savings



REBATE DETAILS, CALCULATORS, VIDEOS, AND MORE
burlingtonelectric.com/ashp

Have questions? Contact us at efficiency@burlingtonelectric.com or (802) 865-7362.



Consider Ground-Source Heat Pumps.

Larger homes, commercial buildings, and shared community systems may find ground-source heat pumps are more cost effective than air source heat pumps. Learn more at burlingtonelectric.com/gshp or call (802) 865-7361.

*Available from BED to first 50 customers.



How Can I Help?

Achieving our Net Zero Energy (NZE) goal will take all of us. There are many ways you can help with Burlington's transition to NZE, including taking advantage of BED's programs and incentives. Additional action steps that will make a difference include:

All Burlingtonians

- Ground Transportation
 - Ride the bus
 - Carpool
 - Commute on a bicycle or an electric bicycle instead of by car
 - Telecommute, if possible
 - Buy or lease a new or pre-owned EV or PHEV to replace a conventional vehicle
 - Charge your EV off-peak with BED's special residential charging rate
- More Ways to Help
 - Talk with your friends and neighbors about the benefits of Net Zero Energy
 - Consider electric instead of gas for your next lawn mower
 - Install a heat pump hot water heater to replace a fossil fuel water heater
 - Buy renewable natural gas from Vermont Gas for any remaining natural gas
 - Install energy efficient light bulbs
 - Use power strips to reduce energy use for electronics

Homeowners

- Lighting and Electric
 - Install energy efficient light bulbs
 - Use power strips to reduce energy use for electronics
 - Purchase Energy Star rated appliances and electronics
 - Go solar with BED's Solar Shopper Program

- Heating and Cooling
 - Sign up for BED's Defeat the Peak and cut energy use during regional energy peaks
 - Get an energy audit from BED or Vermont Gas Systems (VGS)
 - Weatherize your home with incentives from BED or VGS
 - Install cold-climate heat pumps to reduce fossil fuel heating use
 - Install a smart thermostat to reduce fossil fuel use

Businesses, Non-Profit Organizations, and Multi-Family Property Owners

- Ground Transportation
 - Install EV charging stations
 - Buy EVs and PHEVs for your fleet to replace conventional vehicles
 - Support bike commuting and transit ridership for your employees
 - Create a carpool or vanpool program
 - Consider implementing a telecommuting policy
- Heating and Cooling
 - Replace fossil fuel heating with cold-climate heat pumps, ground source heat pumps, or variable refrigerant heat pumps
 - Weatherize your buildings with incentives from BED or VGS
 - Install a heat pump hot water heater to replace a fossil fuel water heater
 - Install smart automated building HVAC controls
 - Sign up for Defeat the Peak and cut energy use during regional peaks
- More Ways to Save
 - Install energy efficient lighting
 - Purchase Energy Star rated appliances and electronics
 - Purchase an electric commercial lawn mower with BED's incentive program
 - Buy renewable natural gas from Vermont Gas for any remaining natural gas use
 - Become a Burlington 2030 District Member and create your Property Energy Plan

Renters

If you are a renter in Burlington, first have a look at the “All Burlingtonians” section above. If you would like to do more to help Burlington reach Net Zero Energy, we ask that you speak with your owner or property manager, as most building upgrades require their approval and oversight. Please know that we are working behind the scenes to uncover ways that will make it easier for you to participate in the future. We also recognize that many renters may own homes at some point, and we hope you will take this opportunity to educate yourself on energy-saving techniques.

Net Zero Energy | Burlington, Vermont
burlingtonelectric.com/NZE
efficiency@burlingtonelectric.com

